

Kenton C. Ward, CFM
Surveyor of Hamilton County
Phone (317) 776-8495
Fax (317) 776-9628

Suite 188
One Hamilton County Square
Noblesville, Indiana 46060-2230

Map Correction-Field Verification

Drain Number: #259

Drain Length: n/a

Drain Name: Cottingham Estates

Change + / - : n/a

Date: 03-27-2015

New Length: n/a

Verified By: SLM

Notes & Sketch: See attached plans.

Existing Structure 24 of the School Arm (1993) to the Cottingham Estates Drain had the casting changed with the instillation of the Roundabout at 131st & Lantern Rd. The structure is now numbered 17 and has a solid lid casting.



Suzanne L. Mills
GIS Specialist

- LEGEND**
- (C) 8 IN. DECORATIVE CONCRETE PAVEMENT ON 3 IN. COMPACTED AGGREGATE BASE, NO. 53, ON 14" STABILIZED SUBGRADE
 - (C1) 6 IN. CONCRETE PAVEMENT ON 8 IN. COMPACTED AGGREGATE, #53 OR PEA GRAVEL ON SUBGRADE COMPACTED IN ACCORDANCE WITH SECTION 207 OF THE INDOT STANDARD SPECIFICATIONS
 - (K) 1.5" HMA SURFACE, TYPE B, 9.5 mm, ON 2.5" HMA INTERMEDIATE, TYPE B, 19.0 mm ON 3.75" HMA BASE, TYPE B, 25.0 mm ON 4" HMA BASE, TYPE B, 25.0 mm ON 14" STABILIZED SUBGRADE
 - (P) BITUMINOUS PATH: 3" HMA SURFACE, TYPE A, 9.5 mm, ON 5" COMPACTED STONE BASE, #53 ON PREPARED SUBGRADE COMPACTED TO 93% MODIFIED PROCTOR
 - (R) 1.5" HMA SURFACE, TYPE B, 9.5 mm, ON 1.5" SURFACE MILLING
 - (S) 4 IN. CONCRETE SIDEWALK ON 4 IN. COMPACTED AGGREGATE, #53 OR PEA GRAVEL
 - (15) COMBINED CONCRETE CURB & GUTTER
 - (16) CONCRETE BARRIER CURB
 - (17) CONCRETE ROLL CURB
 - (18) CONCRETE CENTER CURB
 - (26) SODDING
 - (X) CURB RAMP, TYPE INDICATED BY LETTER

SEC. 25, T18N, R4E
FALL CREEK TWP.
HAMILTON COUNTY

CURVE DATA
P.I. 100+00.00 "PR-R"
 $\Delta = 359^\circ 59' 56.7" \text{ LT.}$
R = 62.50'
L = 392.70'
T = 0.00'
E = 1.25'
S.E. = N.C.

POC 100+00.00 "PR-R" =
POC 103+92.70 "PR-R"

STR. NO. 17, 17+33 Lt. "PR-A"
Exist. Inlet & Pipe
Replace Casting With Type 4 Casting
Adjust to Grade

STR. NO. 14, 17+05 Lt. "PR-A"
Catch Basin Type J10 With
ADS Storm Pure Insert &
28' of 12" Pipe Req.d

STR. NO. 12, 16+75 Lt. "PR-A"
Inlet Type M10 &
40' of 12" Pipe Req.d

STR. NO. 11, 16+60 Lt. "PR-A"
Catch Basin Type J10 With
ADS Storm Pure Insert &
12' of 12" Pipe Req.d

STR. NO. 10, 14+95 Lt. "PR-A"
Exist. Inlet & Pipes
No Change Req.d

STR. NO. 18, 18+54 Lt. "PR-A"
Inlet Manhole & Pipe
No Change Req.d

STR. NO. 25, 20+15 Lt. "PR-A"
Existing Pipe, No Change

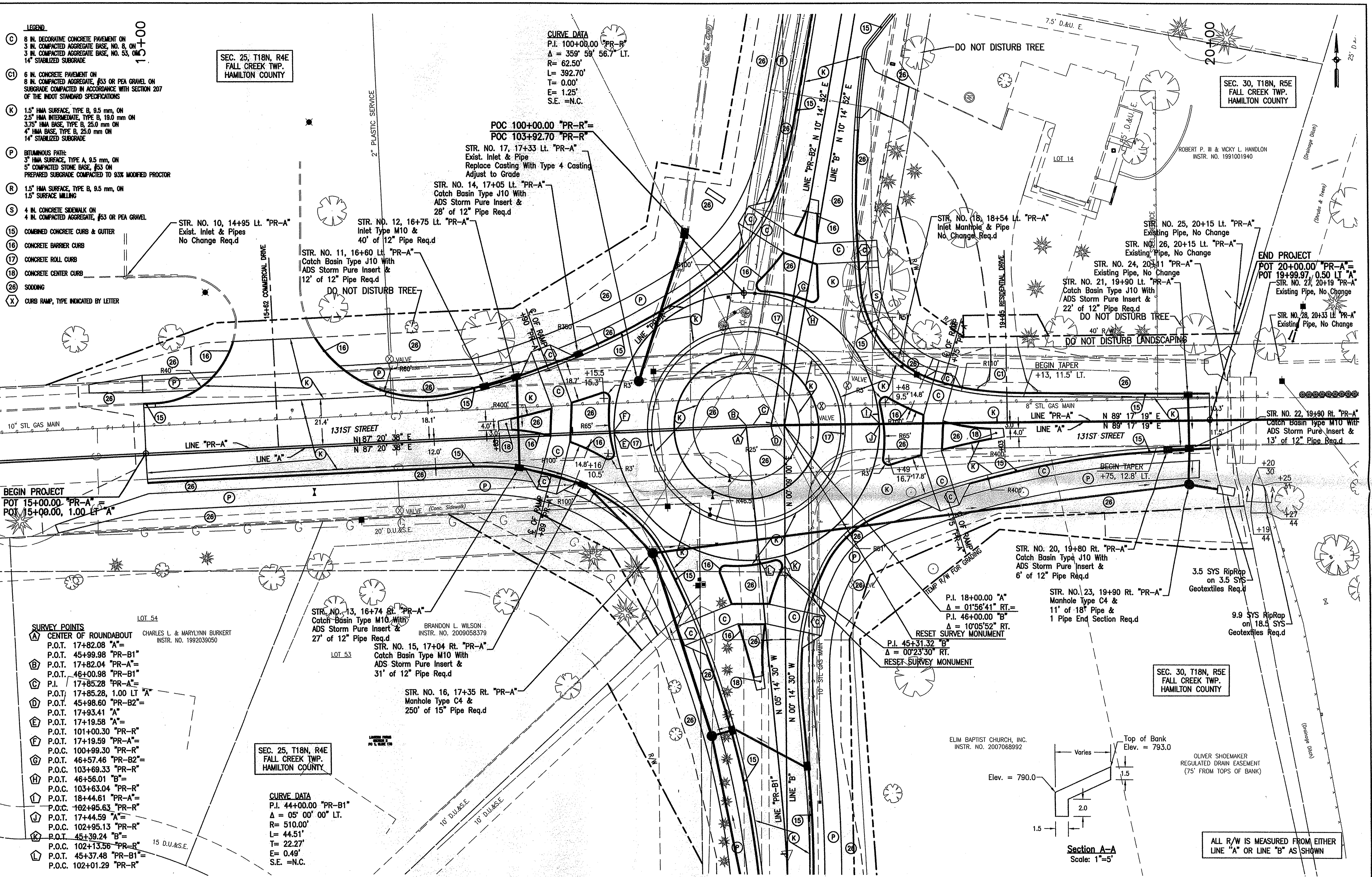
STR. NO. 26, 20+15 Lt. "PR-A"
Existing Pipe, No Change

STR. NO. 24, 20+11 Lt. "PR-A"
Existing Pipe, No Change

STR. NO. 21, 19+90 Lt. "PR-A"
Catch Basin Type J10 With
ADS Storm Pure Insert &
22' of 12" Pipe Req.d

END PROJECT
POT 20+00.00 "PR-A" =
POT 19+99.97, 0.50 Lt. "A"
STR. NO. 27, 20+19 Lt. "PR-A"
Existing Pipe, No Change

STR. NO. 28, 20+33 Lt. "PR-A"
Existing Pipe, No Change



BEGIN PROJECT
POT 15+00.00 "PR-A" =
POT 15+00.00, 1.00 Lt. "A"

STR. NO. 22, 19+80 Rt. "PR-A"
Catch Basin Type M10 With
ADS Storm Pure Insert &
13' of 12" Pipe Req.d

STR. NO. 20, 19+80 Rt. "PR-A"
Catch Basin Type J10 With
ADS Storm Pure Insert &
6' of 12" Pipe Req.d

3.5 SYS RipRap
on 3.5 SYS
Geotextiles Req.d

9.9 SYS RipRap
on 18.5 SYS
Geotextiles Req.d

STR. NO. 13, 16+74 Rt. "PR-A"
Catch Basin Type M10 With
ADS Storm Pure Insert &
27' of 12" Pipe Req.d

STR. NO. 15, 17+04 Rt. "PR-A"
Catch Basin Type M10 With
ADS Storm Pure Insert &
31' of 12" Pipe Req.d

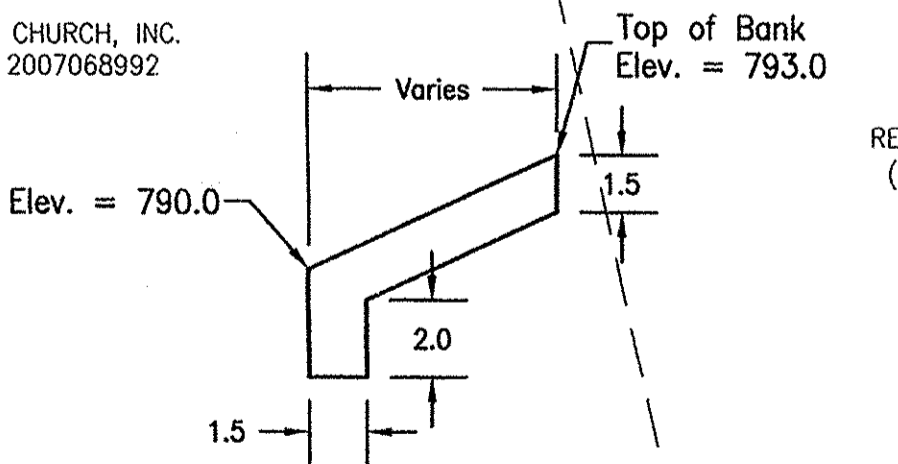
STR. NO. 16, 17+35 Rt. "PR-A"
Manhole Type C4 &
250' of 15" Pipe Req.d

P.I. 18+00.00 "A"
 $\Delta = 01^\circ 56' 41" \text{ RT.}$
P.I. 46+00.00 "B"
 $\Delta = 10^\circ 05' 52" \text{ RT.}$
RESET SURVEY MONUMENT

P.I. 45+31.32 "B"
 $\Delta = 00^\circ 23' 30" \text{ RT.}$
RESET SURVEY MONUMENT

SEC. 25, T18N, R4E
FALL CREEK TWP.
HAMILTON COUNTY

CURVE DATA
P.I. 44+00.00 "PR-B1"
 $\Delta = 05^\circ 00' 00" \text{ LT.}$
R = 510.00'
L = 44.51'
T = 22.27'
E = 0.49'
S.E. = N.C.

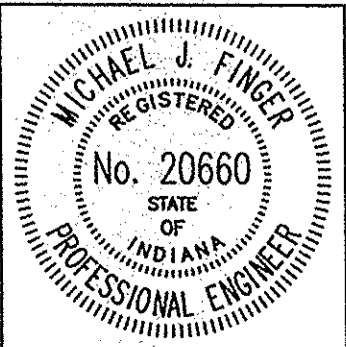


ALL R/W IS MEASURED FROM EITHER
LINE "A" OR LINE "B" AS SHOWN

- SURVEY POINTS**
- (A) CENTER OF ROUNDABOUT CHARLES L. & MARYLYNN BURKERT INSTR. NO. 1992039050
 - P.O.T. 17+82.08 "A" =
 - P.O.T. 45+99.98 "PR-B1" =
 - P.O.T. 17+82.04 "PR-A" =
 - P.O.T. 46+00.98 "PR-B1" =
 - P.I. 17+85.28 "PR-A" =
 - P.O.T. 17+85.28, 1.00 Lt. "A" =
 - P.O.T. 45+98.60 "PR-B2" =
 - P.O.T. 17+93.41 "A" =
 - P.O.T. 17+19.58 "A" =
 - P.O.T. 101+00.30 "PR-R" =
 - P.O.T. 17+19.59 "PR-A" =
 - P.O.C. 100+99.30 "PR-R" =
 - P.O.T. 46+57.46 "PR-B2" =
 - P.O.C. 103+69.33 "PR-R" =
 - P.O.T. 46+56.01 "B" =
 - P.O.C. 103+63.04 "PR-R" =
 - P.O.T. 18+44.61 "PR-A" =
 - P.O.C. 102+95.63 "PR-R" =
 - P.O.T. 17+44.59 "A" =
 - P.O.C. 102+95.13 "PR-R" =
 - P.O.T. 45+39.24 "B" =
 - P.O.C. 102+13.56 "PR-R" =
 - P.O.T. 45+37.48 "PR-B1" =
 - P.O.C. 102+01.29 "PR-R" =

A&F ENGINEERING
Transportation Engineering Services
Creating Order Since 1966

8365 Keystone Crossing, Suite 201, Indianapolis, IN. 46240 (317) 202-0864



RECOMMENDED FOR APPROVAL	<i>Michael J. Finger</i>	5/27/2011
DESIGNED:	DSS	DRAWN:
CHECKED:	JTR	CHECKED:

TOWN OF FISHERS
131ST & LANTERN ROAD
CONSTRUCTION DETAILS-"PR-A"

HORIZONTAL SCALE	BRIDGE FILE
1" = 20'	
VERTICAL SCALE	DESIGNATION
1" = 20'	
SURVEY BOOK	SHEETS
CONTRACT	10 of 33
	PROJECT

Z:\2010\10020 131st & Lantern\dwg\10020 CD-1 1"=20' 05-19-11 RGS.mif